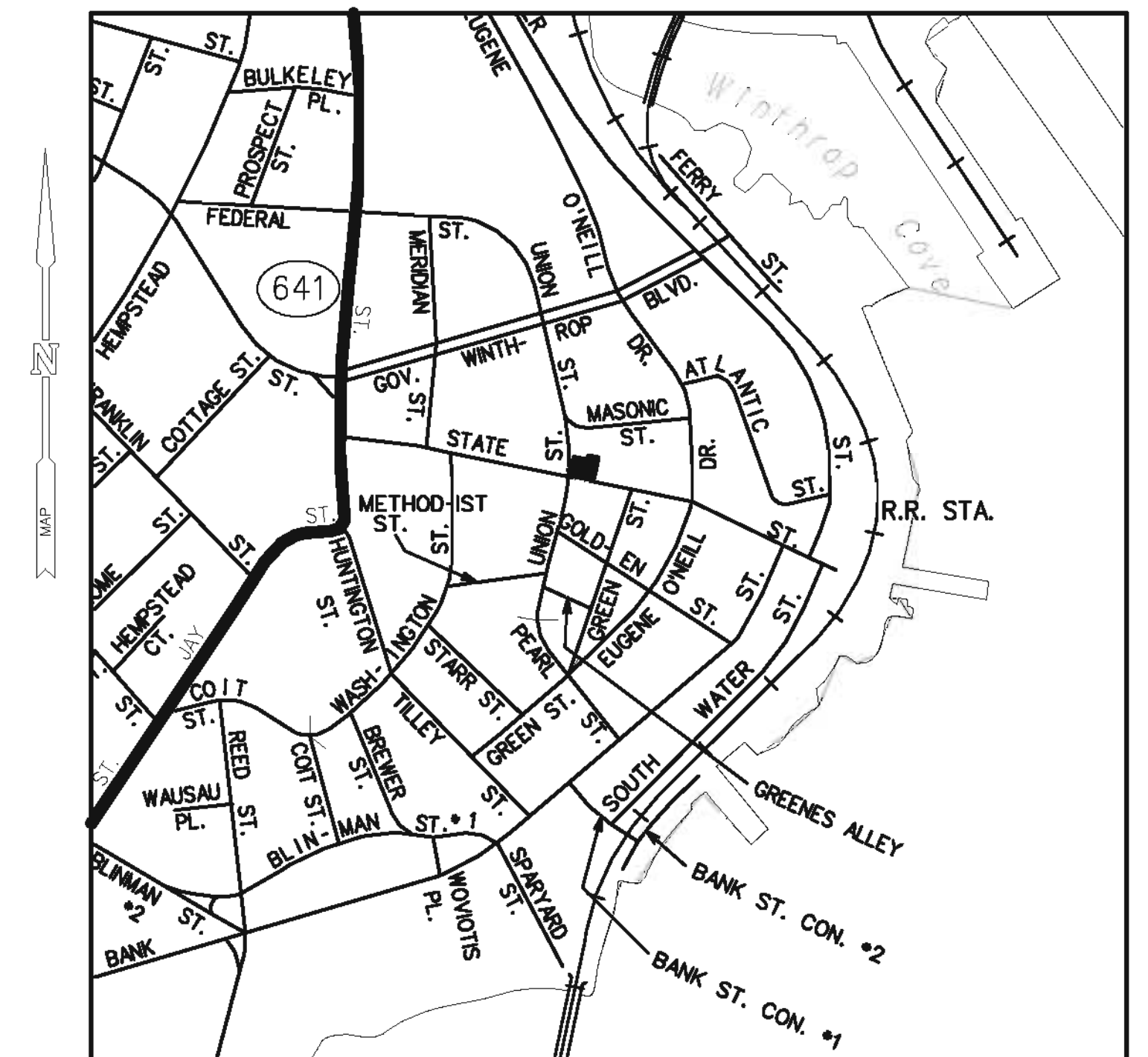


MUNICIPAL ENGINEERING SERVICES REPLACEMENT OF CITY HALL ROOF

181 STATE STREET
NEW LONDON
CONNECTICUT

DECEMBER 03, 2010



PROJECT LOCATION MAP:

0 1/2" 1"
SCALE: 1"=500'

• **OWNER/APPLICANT**

DEPARTMENT OF PUBLIC WORKS
CITY OF NEW LONDON
111 UNION STREET
NEW LONDON, CT 06320

ENGINEER OF RECORD

MILONE & MACBROOM®
*Engineering,
Landscape Architecture
and Environmental Science*

99 Realty Drive
Cheshire, Connecticut 06410
(203) 271-1773 Fax (203) 272-9733
www.miloneandmacbroom.com

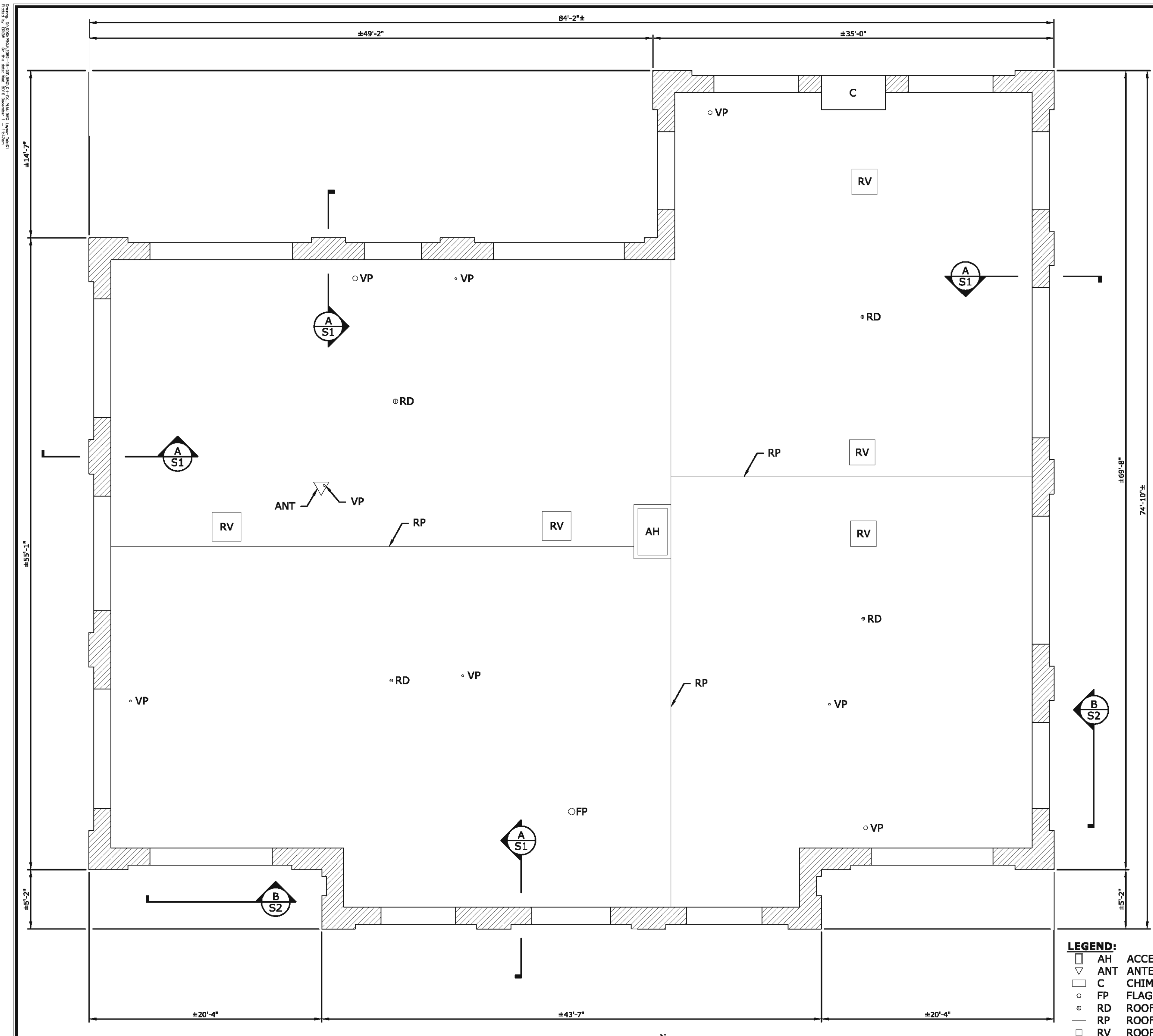
LIST OF PLANS:

- 1 TITLE SHEET
- 2 EXISTING ROOF PLAN AND DETAILS
- 3-4 ROOF DETAILS
- 5-6 INSPECTION PHOTOS



KISHOR PATEL, P.E. STRUCTURAL ENGINEER/ASSOCIATE
CONN. PROFESSIONAL REG. NO. 23980
DATE: 12/2/2010

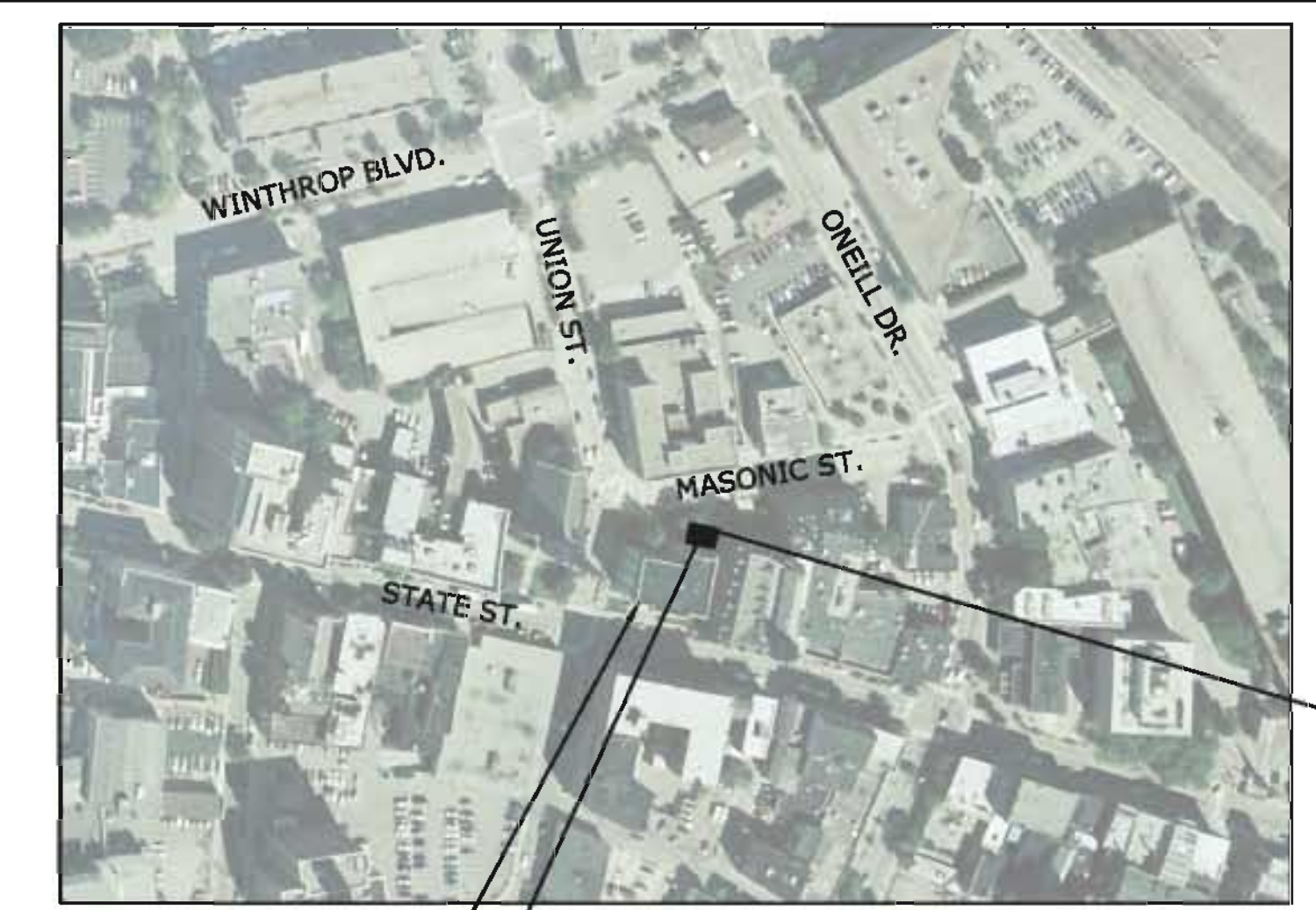




ROOF PLAN
SCALE: 3/16" = 1'-0"

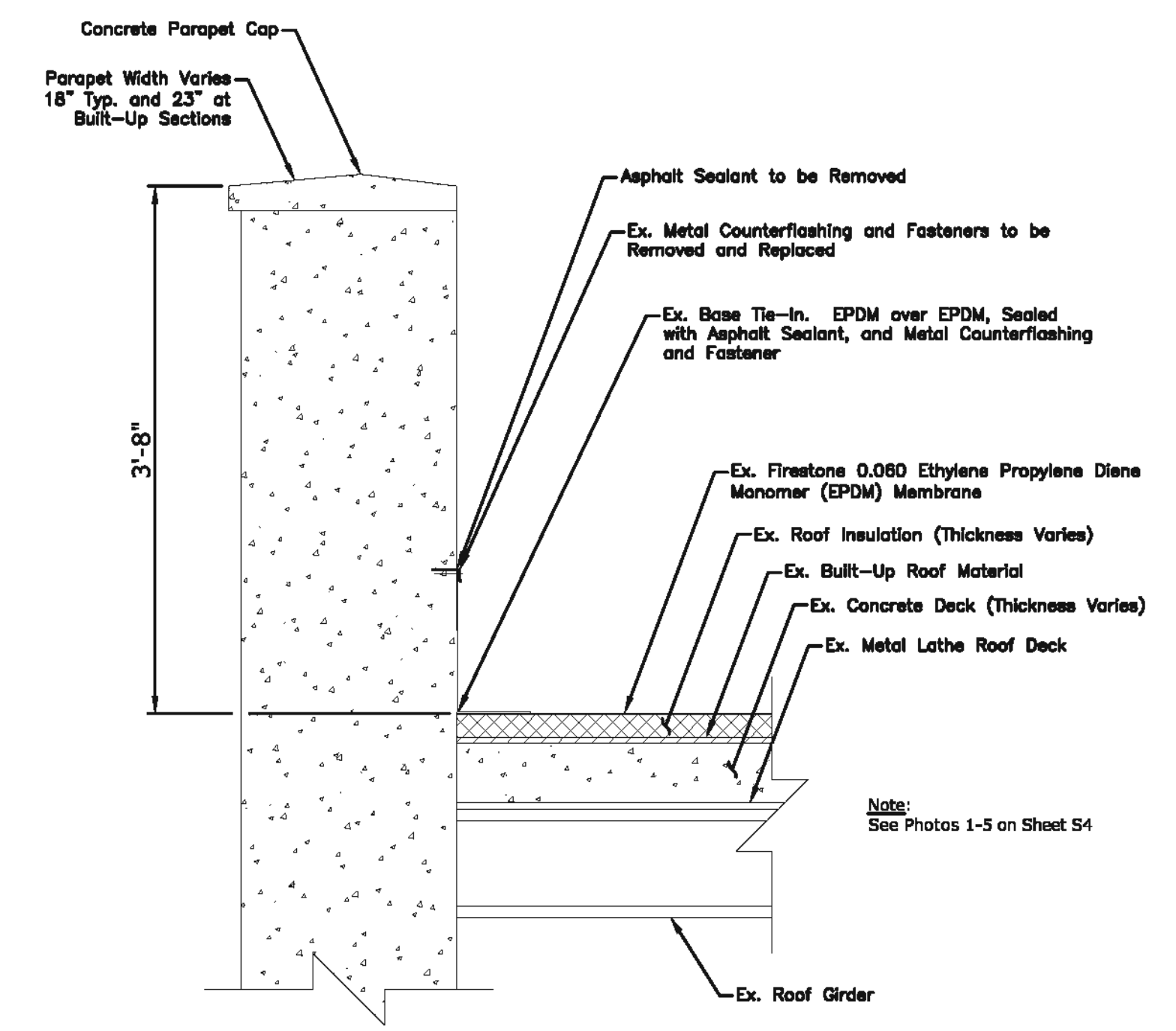
- LEGEND:**
- AH ACCESS HATCH
 - ▽ ANT ANTENNA
 - C CHIMNEY
 - FP FLAGPOLE
 - RD ROOF DRAIN
 - RP ROOF PEAK
 - RV ROOF VENT
 - VP VENT PIPE

- NOTES:**
1. THE EXISTING ROOFING SHALL BE REMOVED IN ITS ENTIRETY TO THE CONCRETE ROOF SLAB. ANY ASBESTOS CONTAINING MATERIALS ENCOUNTERED SHALL BE PROPERLY DISPOSED OF; SEE REMOVAL, HANDLING, AND DISPOSAL OF ASBESTOS CONTAINING MATERIAL SPECIFICATION (020800).
 2. CONTRACTOR SHALL NOT STORE ANY MATERIALS ON TOP OF ROOF AT ANY TIME. ANY MATERIAL TO BE DISPOSED OF SHALL BE PLACED IN THE DUMPSTER BELOW.
 3. THE (4) EXISTING ROOF DRAINS SHALL BE REPLACED. EXISTING WOODEN DRAIN BOXES SHALL BE REMOVED AND THE CONCRETE SLAB SHALL BE REPAIRED AT EACH ROOF DRAIN LOCATION. DUCTILE IRON PIPE LOCATED WITHIN THE CITY HALL ATTIC SHALL REMAIN IN PLACE AND SHALL BE WRAPPED WITH INSULATION PER ROOF ACCESSORIES SPECIFICATIONS SECTION 2.02. TOTAL LENGTH OF 5" O.D. DRAIN PIPE INSULATION IS APPROXIMATELY 20 LF. TOTAL LENGTH OF 6" O.D. DRAIN PIPE INSULATION IS APPROXIMATELY 80 LINER FEET.
 4. IF ANY FIELD CONDITIONS PRECLUDE COMPLIANCE WITH THE DETAILS SHOWN, NOTIFY THE ENGINEER IMMEDIATELY.

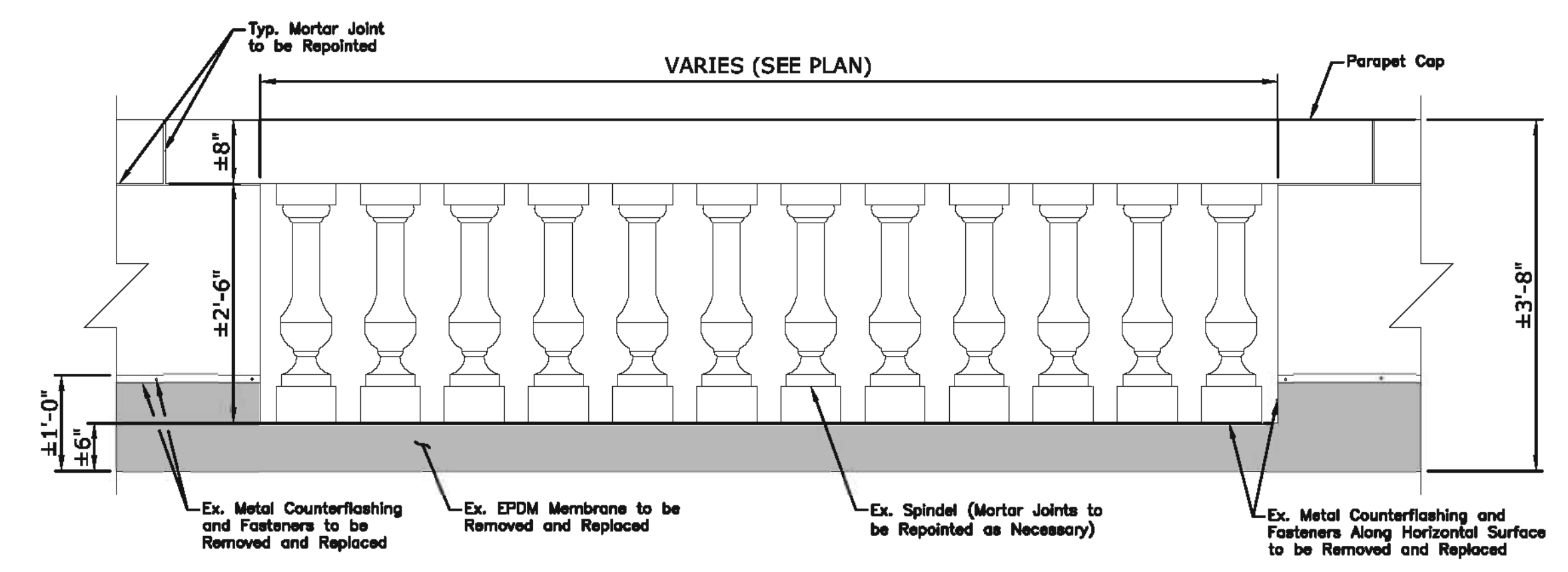


NEW LONDON CITY HALL
PROPOSED CONSTRUCTION
DUMPSTER LOCATION TO BE
COORDINATED WITH THE CITY

PROPOSED CONSTRUCTION DUMPSTER LOCATION
SCALE: 1" = 200'

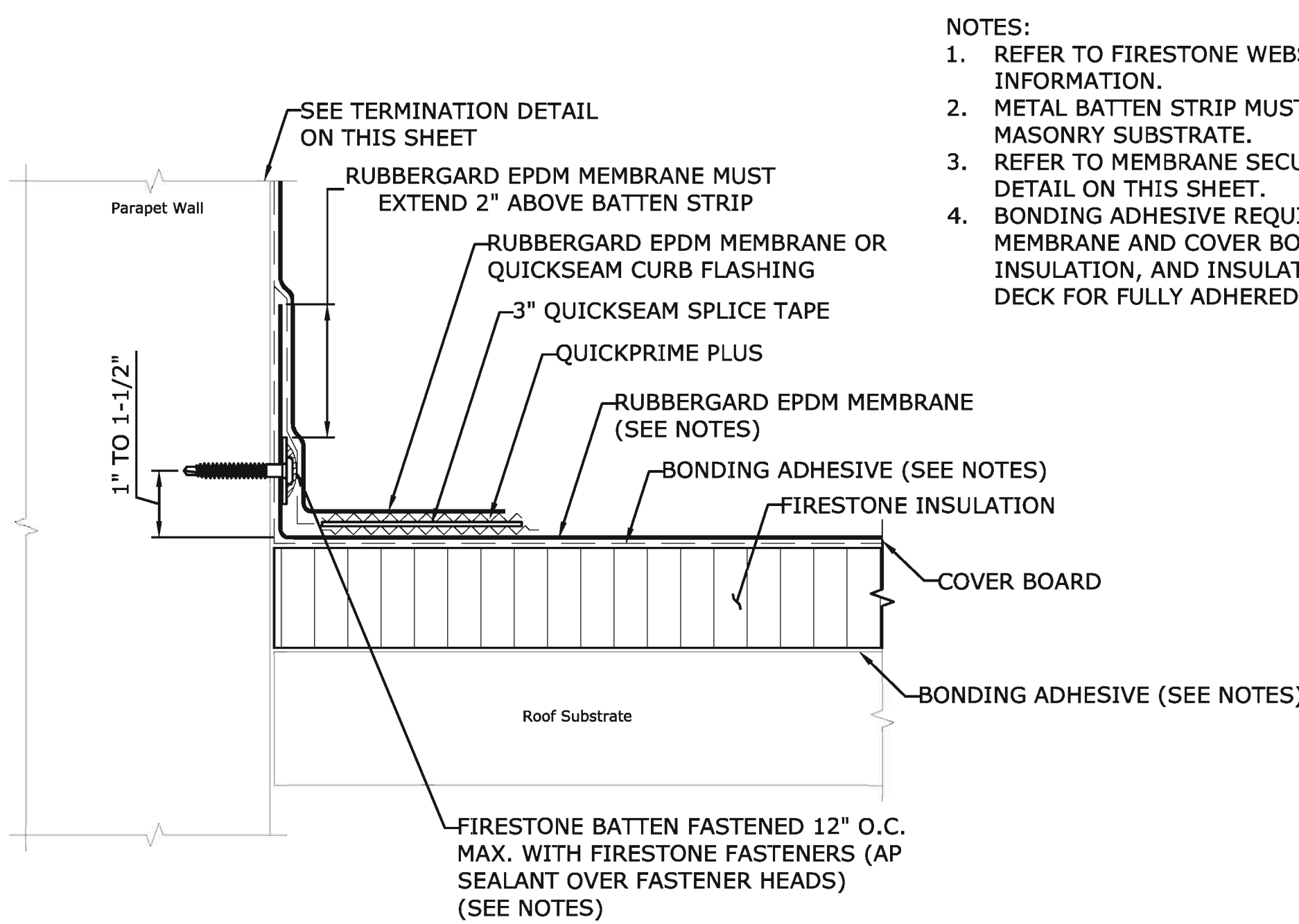


EXISTING PARAPET WALL SECTION
SCALE: 3/4" = 1'-0"



EXISTING PARAPET ELEVATION
SCALE: 3/4" = 1'-0"

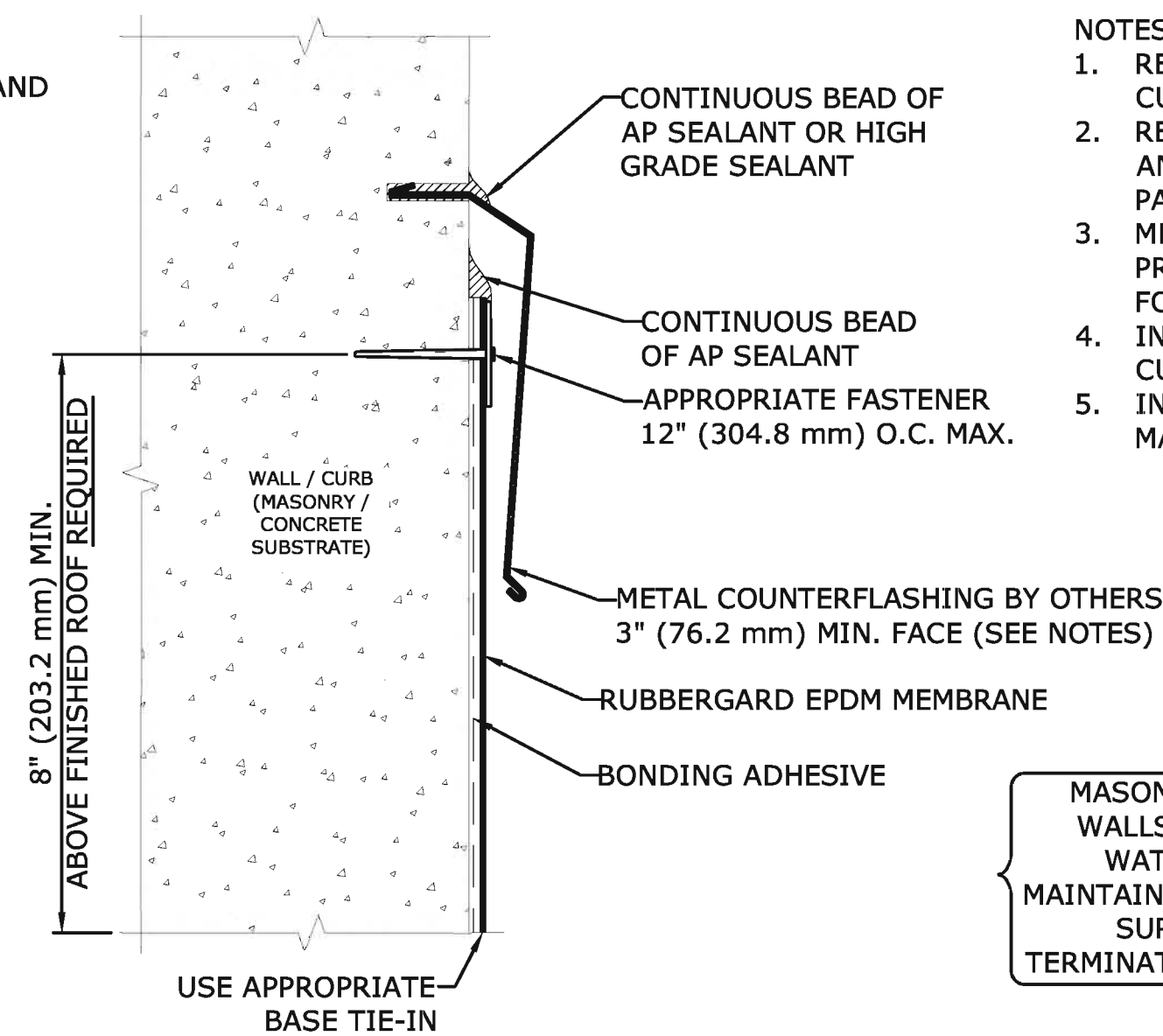
					CITY OF NEW LONDON SUBMITTED BY: MMI DATE: 12/03/2010 APPROVED BY: DATE: CADD - FILENAME: CH-EX_PLAN.dwg	DRAWING TITLE: EXISTING ROOF PLAN AND DETAILS MUNICIPAL ENGINEERING SERVICES REPLACEMENT OF CITY HALL ROOF	PROJECT NO: 2389-15-33
REVISION	DATE	CITY	DESCRIPTION				DRAWING NO: S1
REVISIONS							SHEET NO: 2



BASE TIE-IN WITH BATTEN FASTENED TO WALL/CURB

NOT TO SCALE

- NOTES:
1. REFER TO FIRESTONE WEBSITE FOR MOST CURRENT INFORMATION.
 2. METAL BATTEN STRIP MUST BE USED WITH MASONRY SUBSTRATE.
 3. REFER TO MEMBRANE SECUREMENT AT CORNERS DETAIL ON THIS SHEET.
 4. BONDING ADHESIVE REQUIRED BETWEEN MEMBRANE AND COVER BOARD, COVER BOARD AND INSULATION, AND INSULATION AND CONCRETE DECK FOR FULLY ADHERED SYSTEMS.

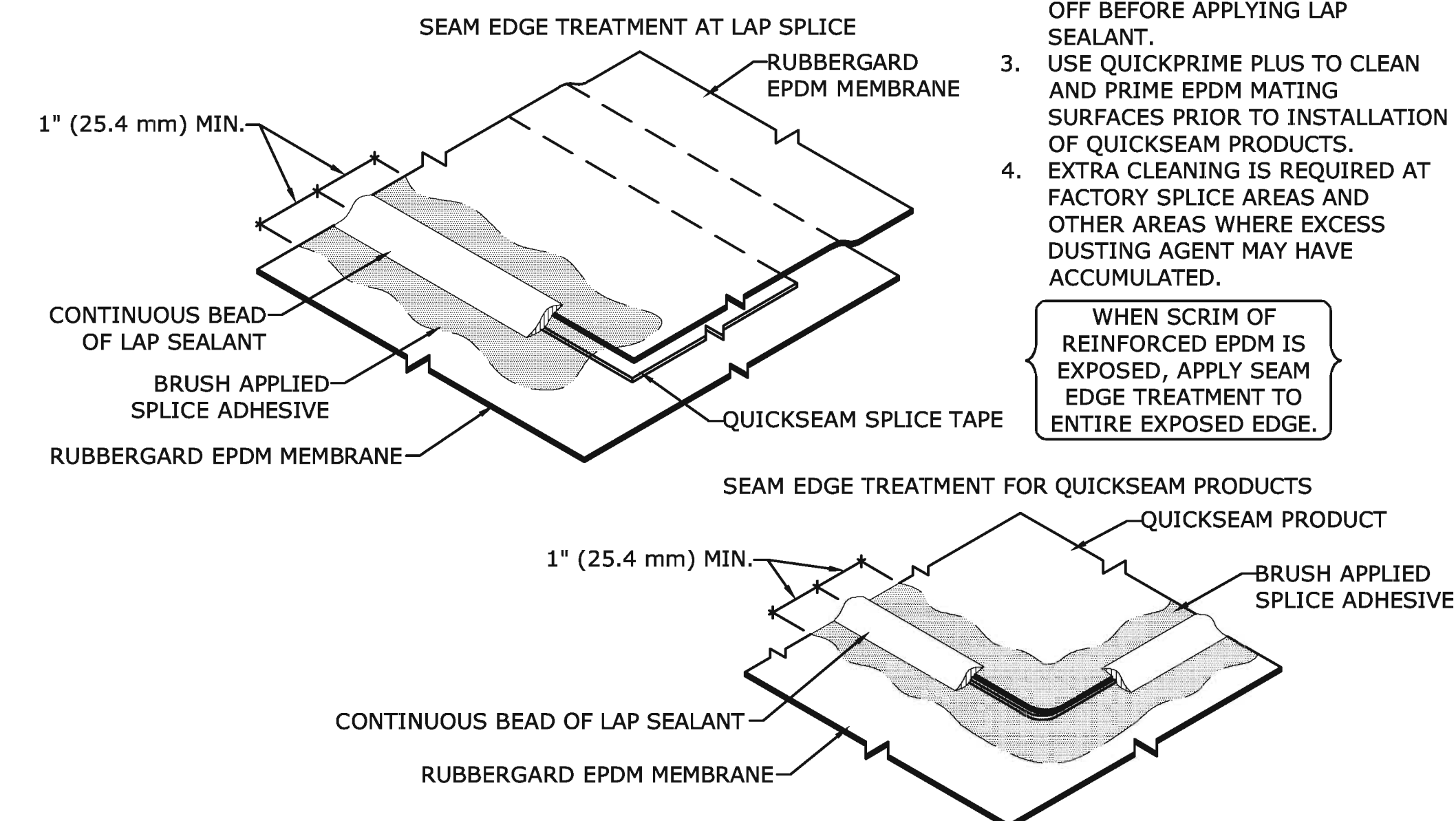


TERMINATION WITH REGLET COUNTERFLASHING

NOT TO SCALE

- NOTES:
1. REFER TO FIRESTONE WEBSITE FOR MOST CURRENT INFORMATION.
 2. REGULAR MAINTENANCE OF COUNTERFLASHING AND SEALANTS REQUIRED. NOT INCLUDED AS PART OF THE FIRESTONE WARRANTY.
 3. METAL COUNTERFLASHING SHALL BE 24 GAUGE PRE-FINISHED STEEL OR .032\"/>

MASONRY AND CONCRETE WALLS / CURBS MUST BE WATERPROOFED AND MAINTAINED IN ORDER FOR ANY SURFACE MOUNTED TERMINATION TO BE EFFECTIVE.

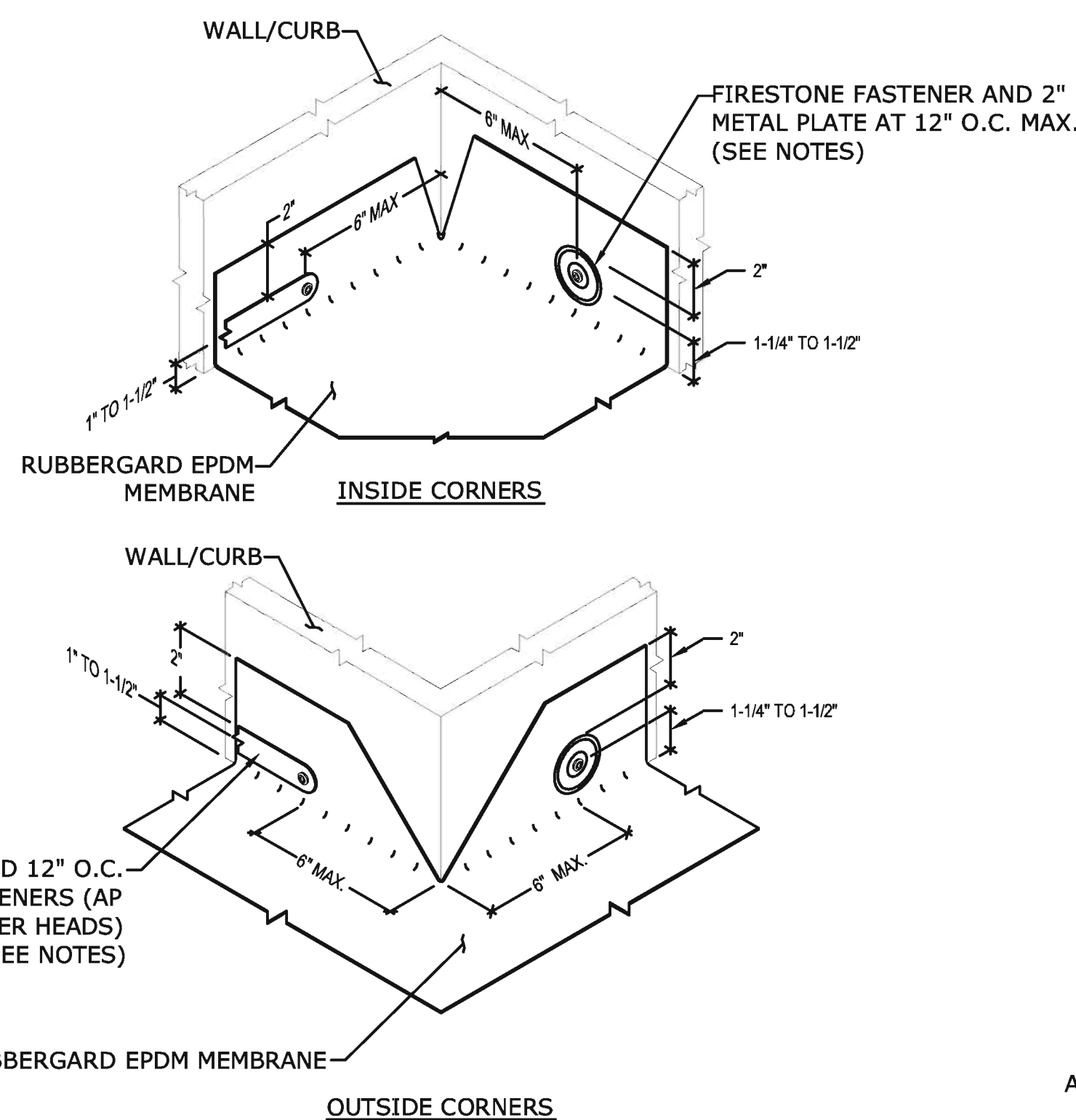


SEAM EDGE TREATMENT APPLICATION

NOT TO SCALE

- NOTES:
1. REFER TO FIRESTONE WEBSITE FOR MOST CURRENT INFORMATION.
 2. ALLOW SPLICE ADHESIVE TO FLASH OFF BEFORE APPLYING LAP SEALANT.
 3. USE QUICKPRIME PLUS TO CLEAN AND PRIME EPDM MATING SURFACES PRIOR TO INSTALLATION OF QUICKSEAM PRODUCTS.
 4. EXTRA CLEANING IS REQUIRED AT FACTORY SPLICE AREAS AND OTHER AREAS WHERE EXCESS DUSTING AGENT MAY HAVE ACCUMULATED.

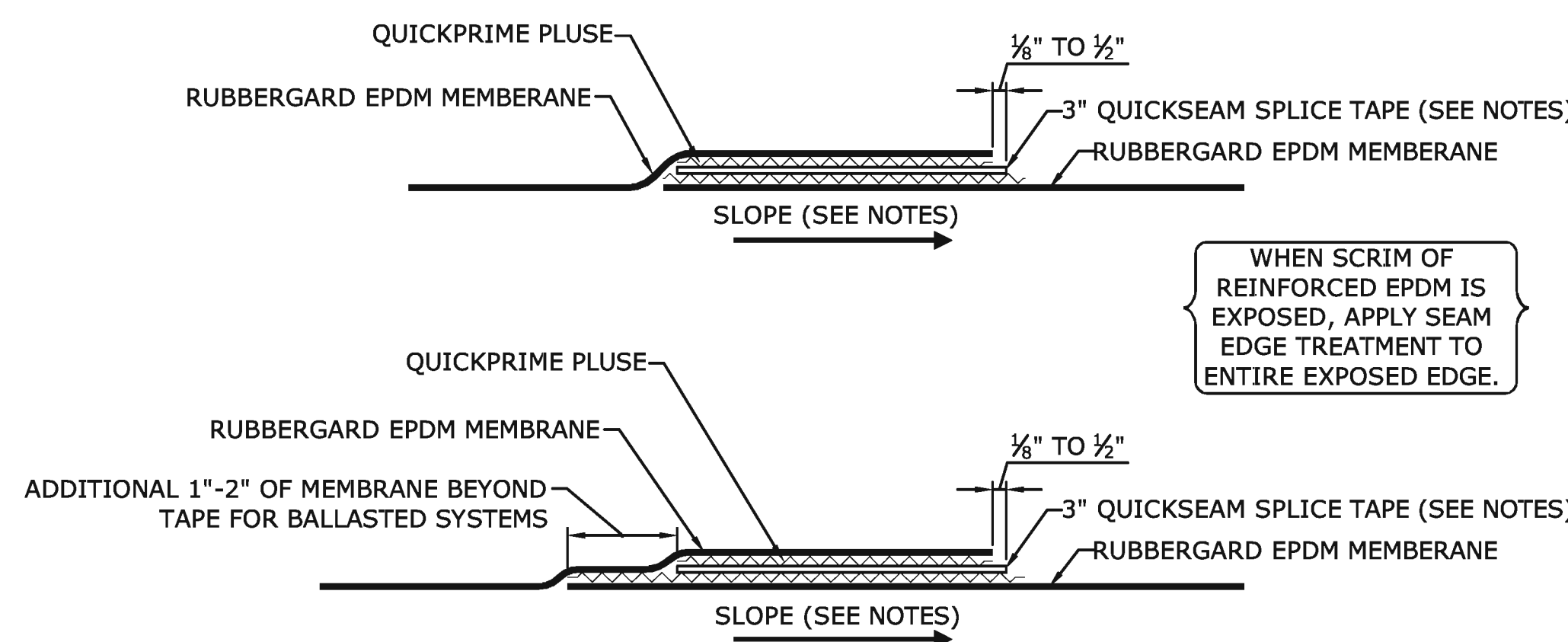
WHEN SCRIM OF REINFORCED EPDM IS EXPOSED, APPLY SEAM EDGE TREATMENT TO ENTIRE EXPOSED EDGE.



WALL/CURB MEMBRANE SECUREMENT INSIDE/OUTSIDE CORNERS

NOT TO SCALE

- NOTES:
1. REFER TO FIRESTONE WEBSITE FOR MOST CURRENT INFORMATION.
 2. MAXIMUM 6\"/>



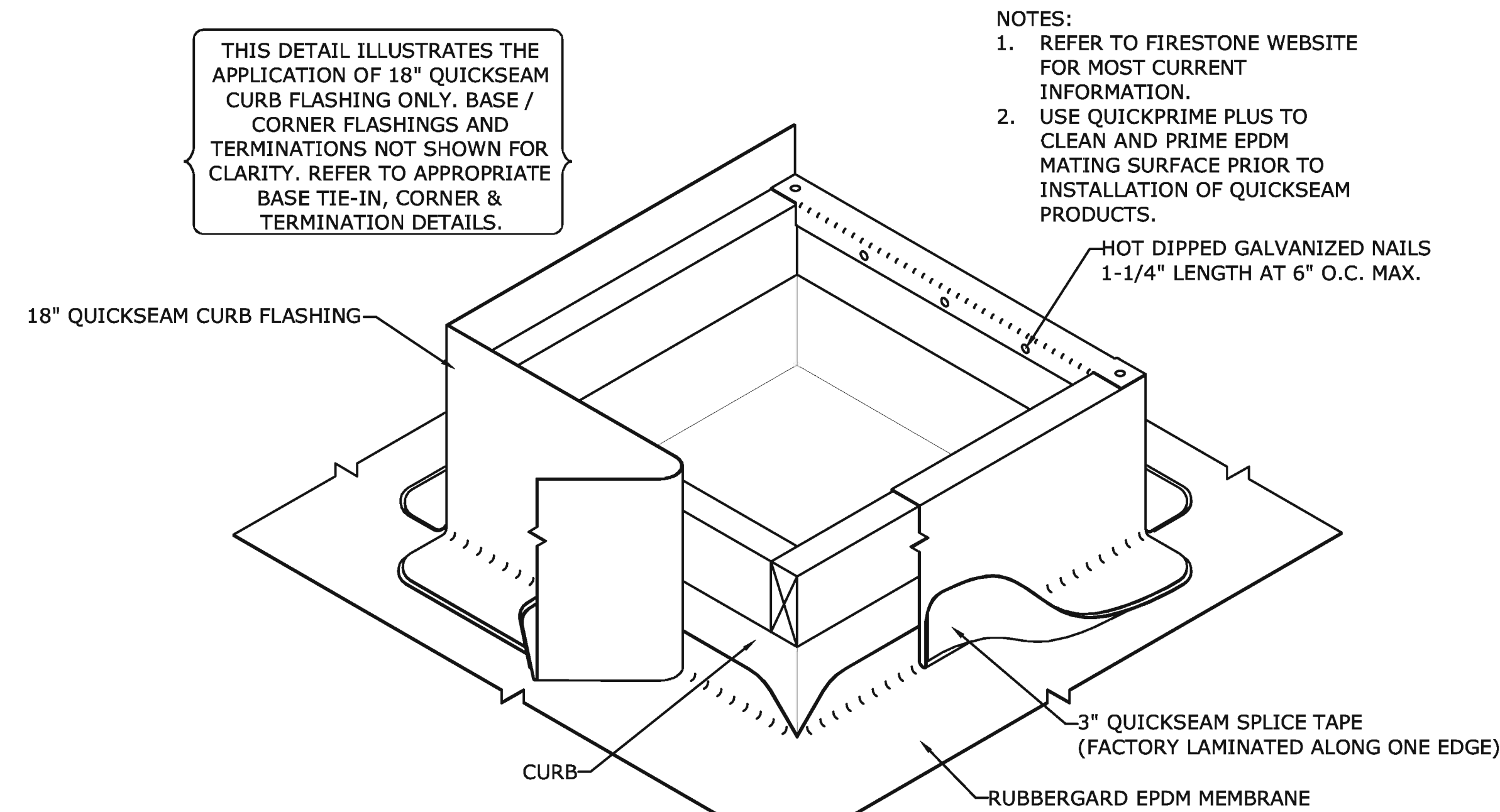
LAP SPLICE

NOT TO SCALE

- NOTES:
1. REFER TO FIRESTONE WEBSITE FOR MOST CURRENT INFORMATION.
 2. END LAPS OF QUICKSEAM SPLICE TAPE MUST OVERLAP A MINIMUM OF 1\"/>

WHEN SCRIM OF REINFORCED EPDM IS EXPOSED, APPLY SEAM EDGE TREATMENT TO ENTIRE EXPOSED EDGE.

THIS DETAIL ILLUSTRATES THE APPLICATION OF 18\"/>



QUICKSEAM CURB FLASHING

NOT TO SCALE

- NOTES:
1. REFER TO FIRESTONE WEBSITE FOR MOST CURRENT INFORMATION.
 2. USE QUICKPRIME PLUS TO CLEAN AND PRIME EPDM MATING SURFACE PRIOR TO INSTALLATION OF QUICKSEAM PRODUCTS.

- NOTES:
1. CONTRACTOR SHALL NOT STORE ANY MATERIALS ON THE ROOF
 2. DETAILS REFERENCED ON THIS SHEET PER FIRESTONE BUILDING PRODUCTS. ROOFING SYSTEM SHALL BE FIRESTONE OR APPROVED EQUAL.

REVISION	DATE	CITY	DESCRIPTION
REVISIONS			



CITY OF NEW LONDON

SUBMITTED BY: MMI DATE: 12/03/2010
 APPROVED BY: DATE:
 CADD - FILENAME: CH-Det.dwg

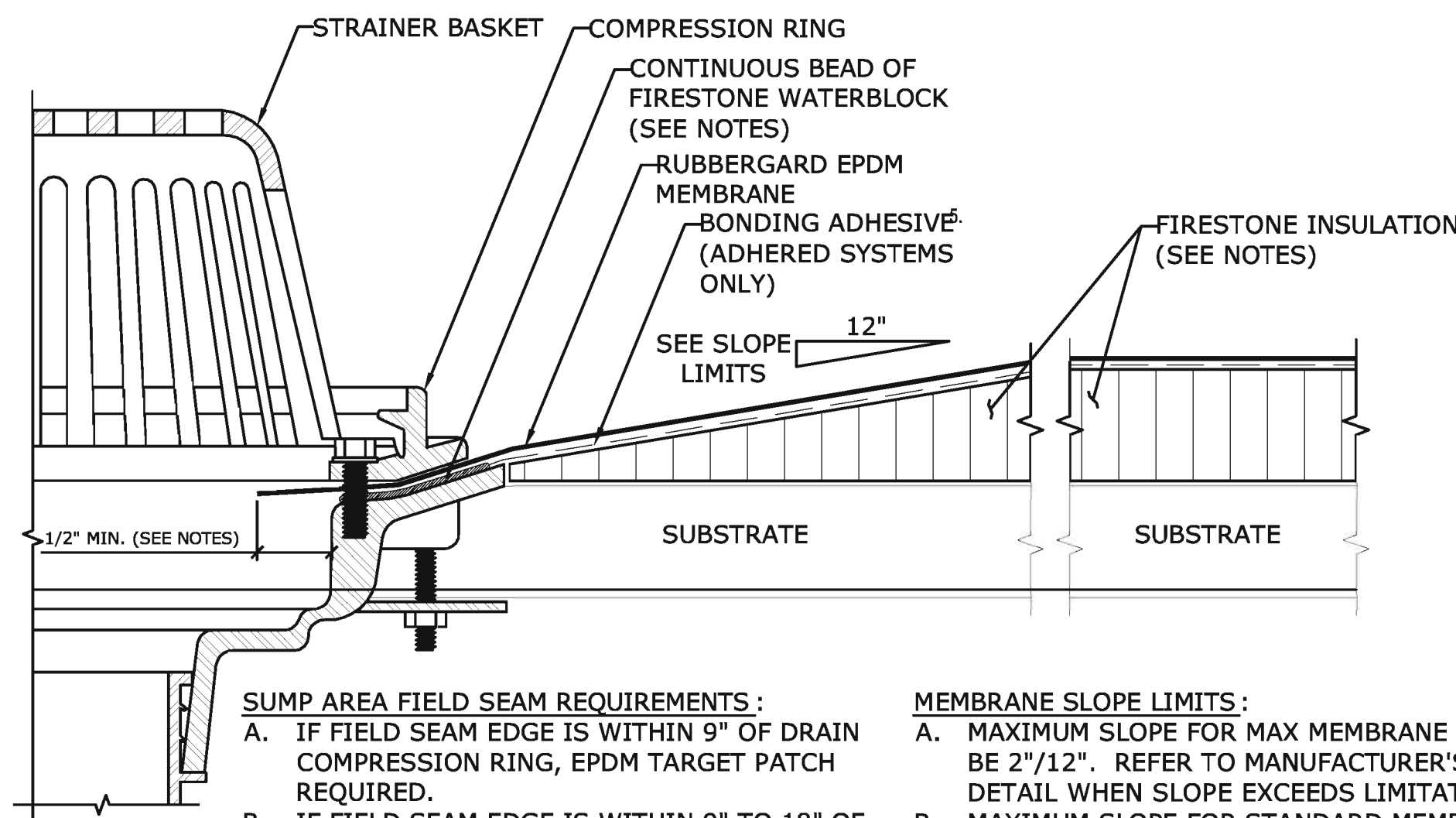
DRAWING TITLE:
 ROOF DETAILS

MUNICIPAL ENGINEERING SERVICES
 REPLACEMENT OF CITY HALL ROOF

PROJECT NO:
 2389-15-33

DRAWING NO:
 S2

SHEET NO:
 3

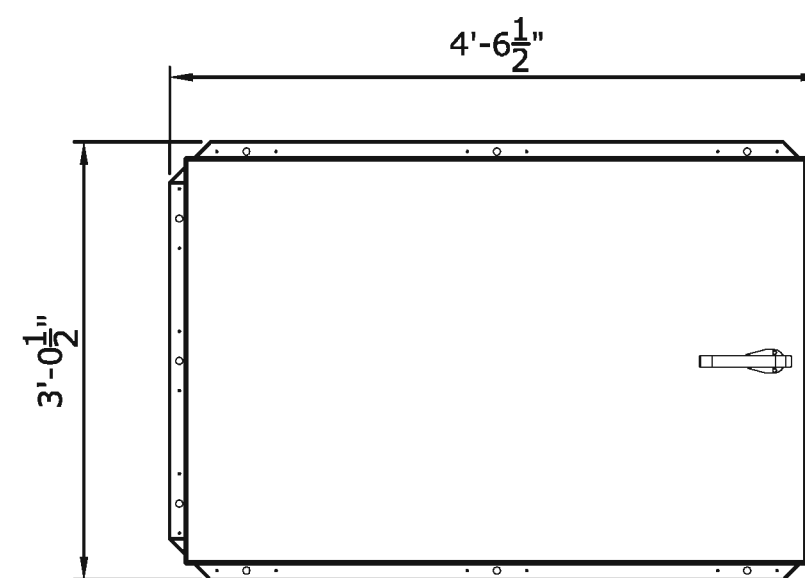


SUMP AREA FIELD SEAM REQUIREMENTS:
 A. IF FIELD SEAM EDGE IS WITHIN 9" OF DRAIN COMPRESSION RING, EPDM TARGET PATCH REQUIRED.
 B. IF FIELD SEAM EDGE IS WITHIN 9" TO 18" OF DRAIN COMPRESSION RING, INSTALL A LAYER OF 5" QUICKSEAM FLASHING CENTERED OVER SEAM EDGE. 5" QUICKSEAM FLASHING MUST EXTEND 3" MIN. BEYOND EDGE OF SUMP.

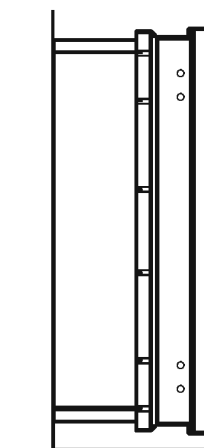
MEMBRANE SLOPE LIMITS:
 A. MAXIMUM SLOPE FOR MAX MEMBRANE SHALL BE 2"/12". REFER TO MANUFACTURER'S DETAIL WHEN SLOPE EXCEEDS LIMITATIONS.
 B. MAXIMUM SLOPE FOR STANDARD MEMBRANE SHALL BE 6"/12"

ROOF DRAIN
NOT TO SCALE

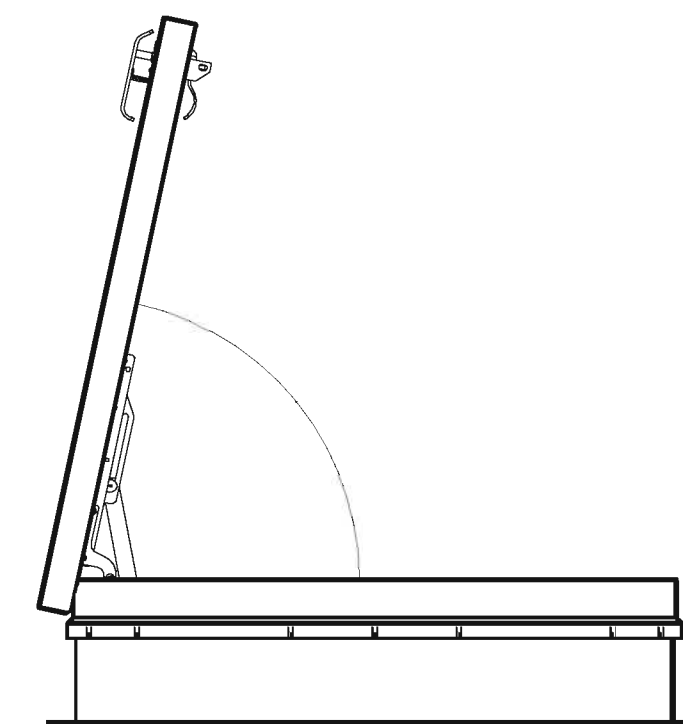
- NOTES:**
- REFER TO FIRESTONE WEBSITE FOR MOST CURRENT INFORMATION.
 - HOLE IN MEMBRANE SHOULD EXTEND A MINIMUM OF 1/2" BEYOND CLAMPING RING AND SHOULD NOT BE SMALLER THAN THE DIAMETER OF THE LEADER PIPE.
 - INSULATION ADJACENT TO DRAIN TO BE APPROPRIATE FIRESTONE INSULATION WITH APPROPRIATE BONDING SURFACE.
 - FIRESTONE WATERBLOCK MIN. OF 1/2 OF 10 OZ. TUBE PER 4" DRAIN. USE ADDITIONAL WATERBLOCK FOR LARGER DRAINS.
 - IN REROOF APPLICATIONS:
 - REMOVE EXISTING FLASHINGS DOWN TO METAL BOWL
 - REPAIR OR REPLACE BROKEN DRAIN COMPONENTS
 - DRILL AND TAP BROKEN DRAIN BOLTS AND REPLACE IF NECESSARY



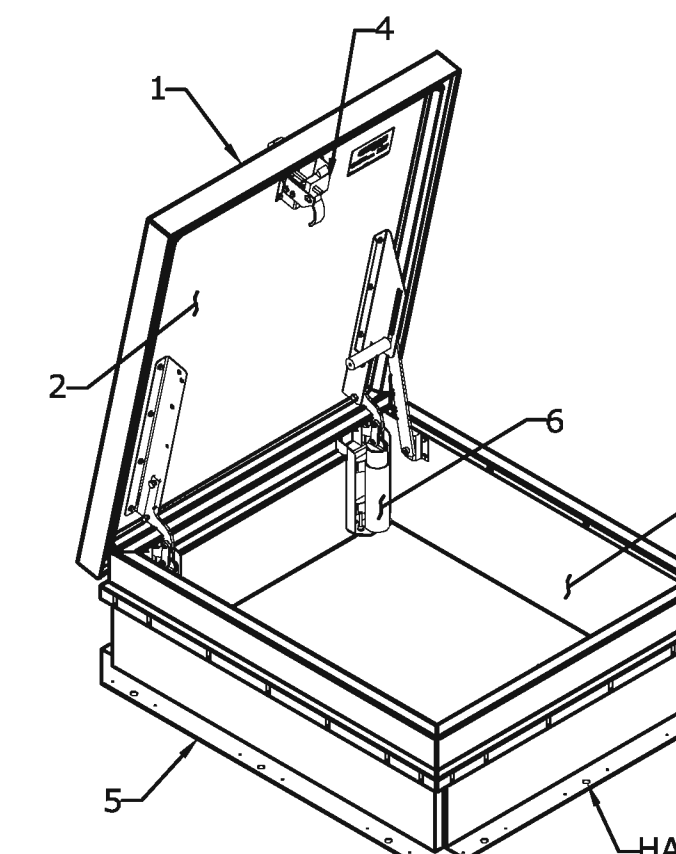
PLAN



SECTION



SECTION

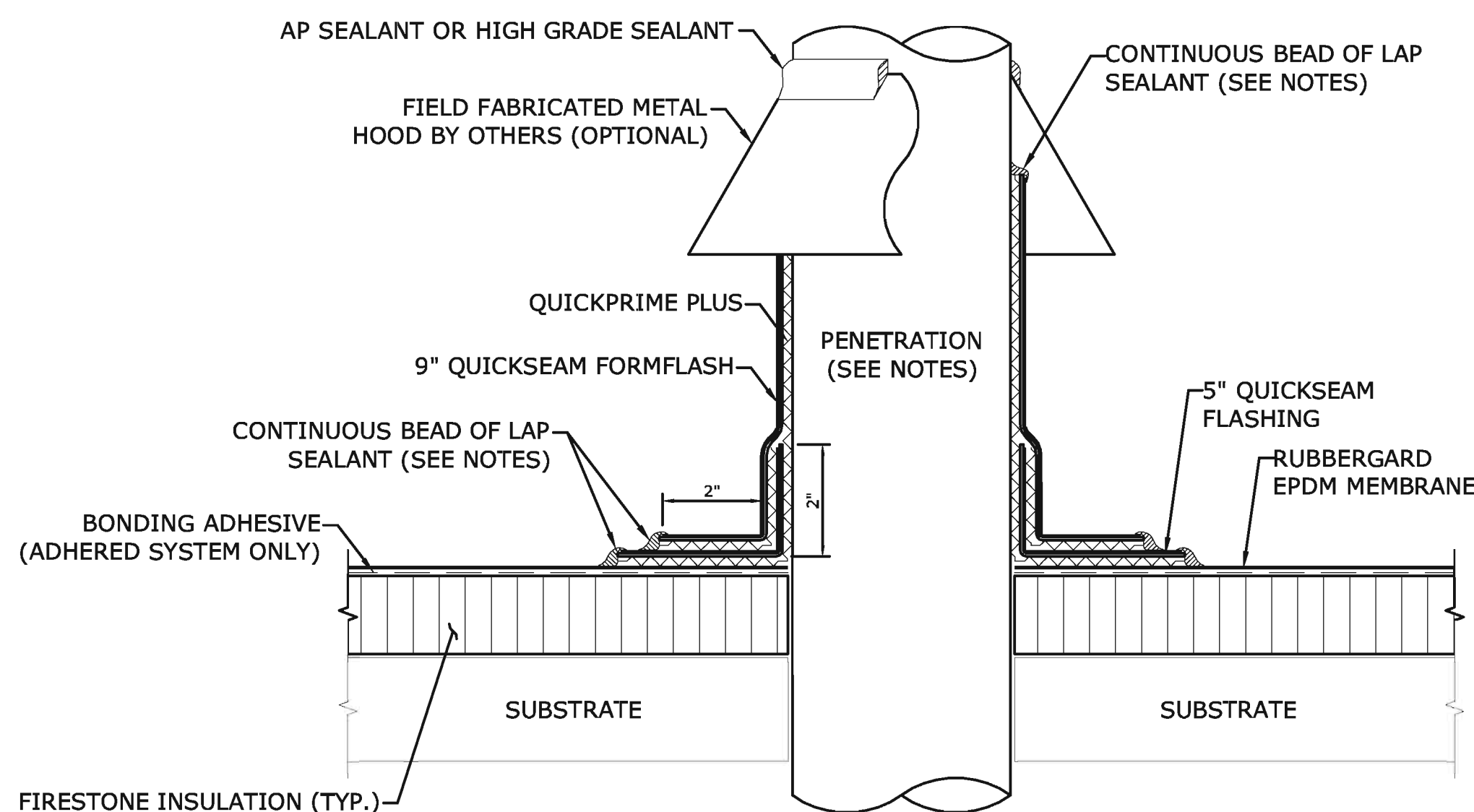


ISOMETRIC

HATCH SHALL BE MOUNTED WITH MIN. 1/2" HILTI EXPANSION BOLTS (TYP.)

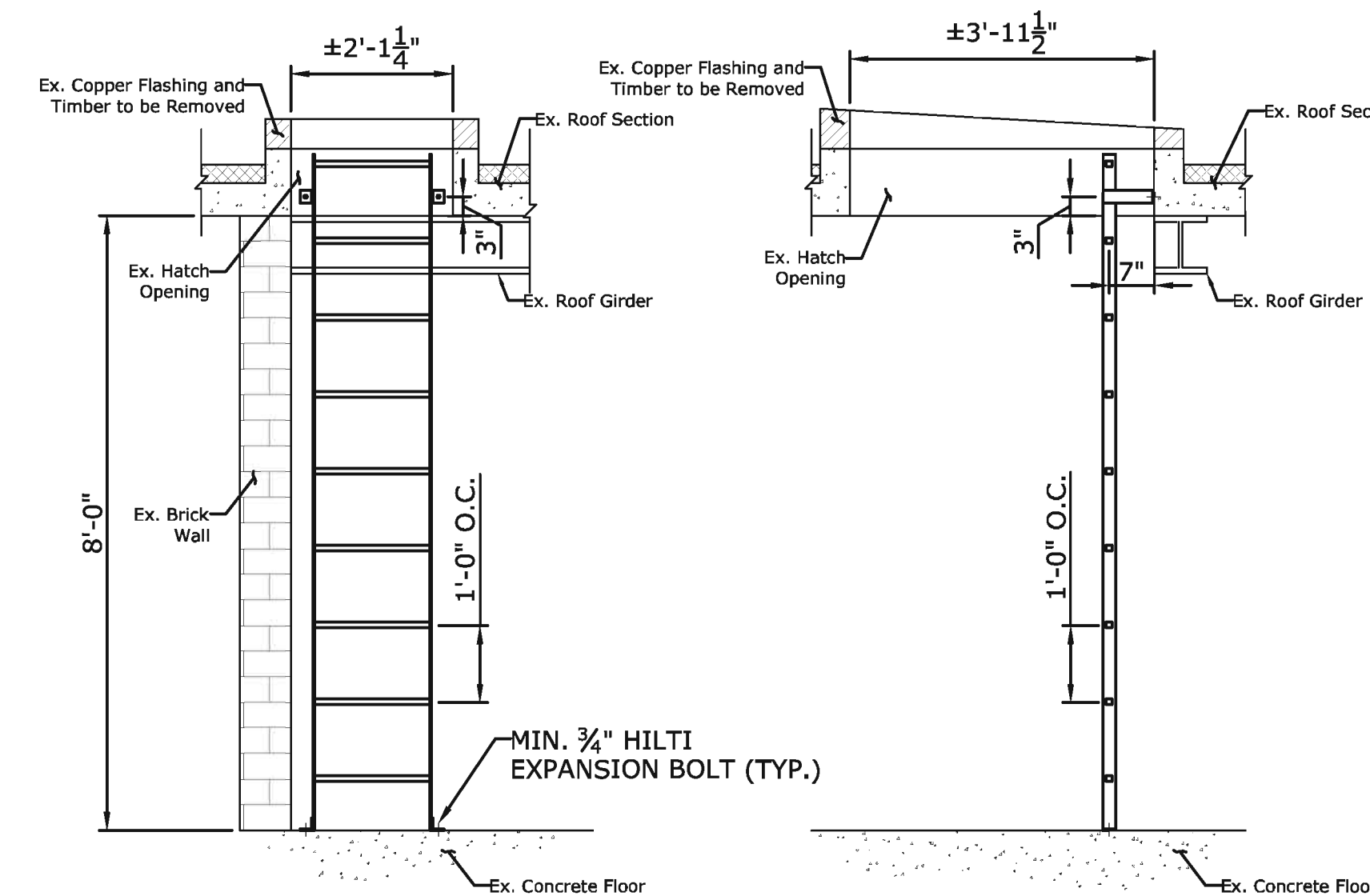
ROOF HATCH/PERSONNEL ACCESS
NOT TO SCALE

- NOTES:**
- HATCH SHALL BE NYSTROM BUILDING PRODUCTS, INC. (MODEL RHA) OR APPROVED EQUAL.
 - COVER - 11 GAUGE ALUMINUM COVER STIFFENED TO WITHSTAND A LIVE LOAD OF 40 PSF WITH A MAX. DEFLECTION OF 1/50 OF THE SPAN. COVER WITHSTANDS A MAX. WIND UPLIFT OF 20 PSF.
 - LINER - 18 GAUGE ALUMINUM.
 - CURB - 11 GAUGE ALUMINUM.
 - LATCH - 2 POINT LATCHING WITH PROVISION FOR PADLOCK SECURITY. LATCH SHALL INCLUDE INTERIOR AND EXTERIOR TURN HANDLES FOR ACCESSIBILITY FROM BOTH SIDES.
 - MOUNTING FLANGE - 3.5"
 - HINGE - ZINC PLATED STEEL, TAMPER-PROOF HINGE CONTAINED WITHIN HATCH AS PART OF SPRING ASSEMBLY.
 - HARDWARE - ZINC PLATED STEEL.
 - INSULATION - 1" THICK IN COVER AND 1" THICK ON CURB PERIMETER.
 - SPRING - GREASED HEAVY DUTY COMPRESSION SPRING.
 - FINISH - MILL FINISH.
 - CURB OPENING - 29.5"(W)x47.5"(L) MEASURE INSIDE CURB TO INSIDE CURB.
 - CONTRACTOR TO VERIFY DIMENSIONS AND SUBMIT W/ SHOP DRAWINGS FOR APPROVAL.



PENETRATION WITH FIELD FABRICATED FLASHING
NOT TO SCALE

- NOTES:**
- REFER TO FIRESTONE WEBSITE FOR MOST CURRENT INFORMATION.
 - REMOVE ALL EXISTING FLASHINGS, LEAD, ETC. PIPE SURFACE MUST BE FREE OF ALL RUST, GREASE, INSULATION, ETC.
 - PIPE MUST BE ANCHORED TO ENSURE STABILITY.
 - CLAMPING RING AROUND TOP OF FORMFLASH NOT ACCEPTABLE.
 - WHEN OUTSIDE DIAMETER OF THE PIPE EXCEEDS 18", ADDITIONAL FIELD MEMBRANE SECUREMENT REQUIRED. REFER TO APPROPRIATE MANUFACTURER'S BASE TIE-IN DETAILS.
 - APPLY LAP SEALANT AROUND ENTIRE PERIMETER OF FLASHING. REFER TO MANUFACTURER'S DETAIL FOR SEAMEDGE TREATMENT.
 - DO NOT USE WHEN SERVICE LINE TEMP. EXCEEDS 180° F. REFER TO MANUFACTURER'S DETAIL.
 - MEMBRANE SECUREMENT AT PENETRATIONS PER MANUFACTURER'S DETAILS.



- GENERAL NOTES:**
- U.S.F. FABRICATION, INC. 18" WIDE FLOOR MOUNTED LADDER OR APPROVED EQUAL
 - SEE PHOTOS 8 AND 11 ON SHEETS S4 AND S5 FOR EXISTING HATCH AND LADDER TO BE REPLACED

FLOOR MOUNTED LADDER W/ SAFETY EXTENSION
NOT TO SCALE

NOTE:
CONTRACTOR TO VERIFY HEIGHT AND SUBMIT W/ SHOP DRAWINGS FOR REVIEW.

- NOTES:**
- CONTRACTOR SHALL NOT STORE ANY MATERIALS ON THE ROOF
 - ROOF DRAIN AND PENETRATIONS PER FIRESTONE BUILDING PRODUCTS OR APPROVED EQUAL.

REVISION	DATE	CITY	DESCRIPTION
REVISIONS			

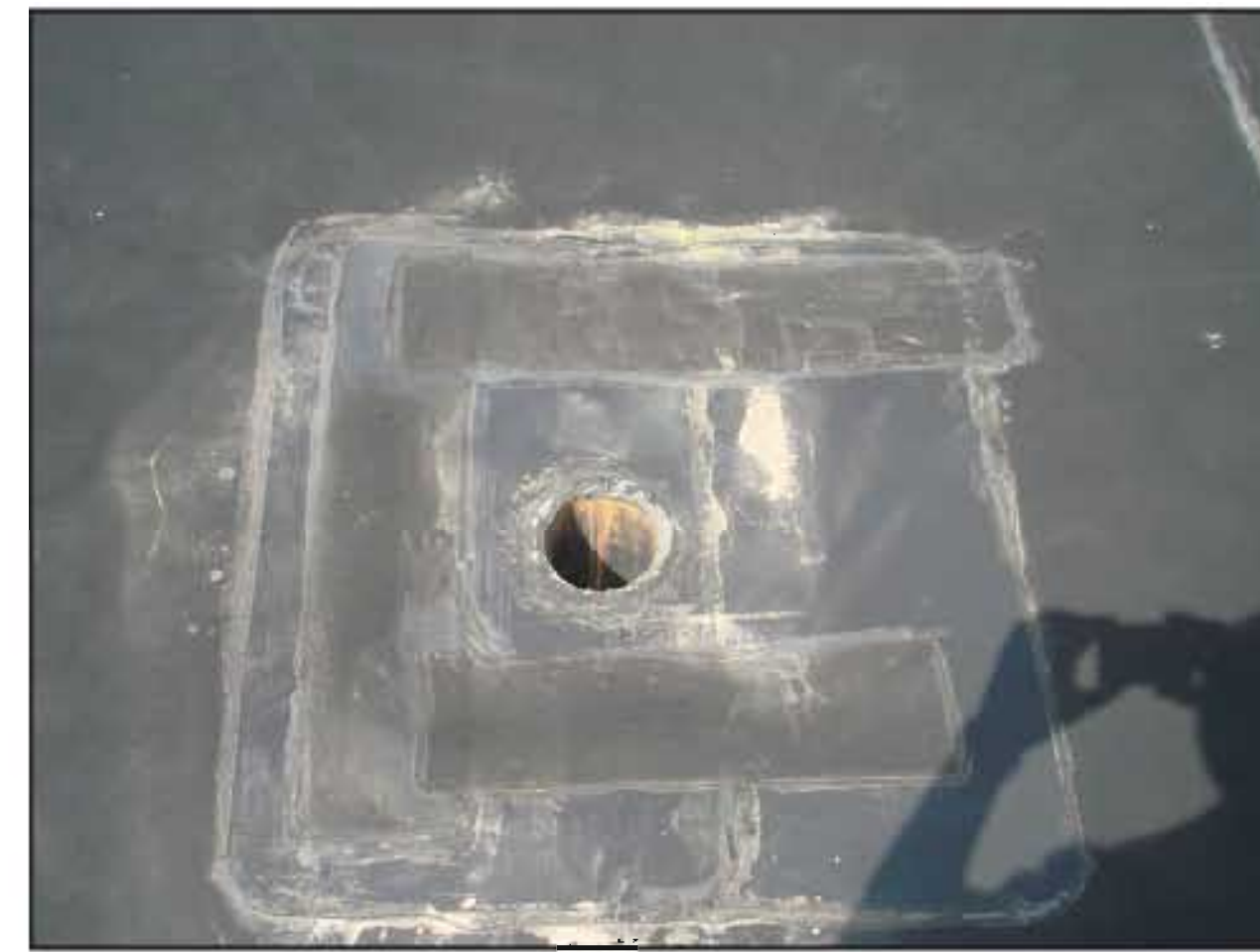



CITY OF NEW LONDON

SUBMITTED BY: MMI DATE: 12/03/2010
 APPROVED BY: DATE:
 CADD - FILENAME: CH-Det.dwg

DRAWING TITLE:
ROOF DETAILS
 MUNICIPAL ENGINEERING SERVICES
 REPLACEMENT OF CITY HALL ROOF

PROJECT NO:
2389-15-33
 DRAWING NO:
S3
 SHEET NO:
4



REVISION	DATE	CITY	DESCRIPTION		CITY OF NEW LONDON		DRAWING TITLE:	PROJECT NO:
						SUBMITTED BY: MMI	DATE: 12/03/2010	INSPECTION PHOTOS
					APPROVED BY:	DATE:	MUNICIPAL ENGINEERING SERVICES	DRAWING NO: S4
					CADD - FILENAME: CH-PHOTOS.dwg		REPLACEMENT OF CITY HALL ROOF	SHEET NO: 5
REVISIONS								



REVISION	DATE	CITY	DESCRIPTION
REVISIONS			



CITY OF NEW LONDON

SUBMITTED BY: MMI DATE: 12/03/2010
 APPROVED BY: DATE:
 CADD - FILENAME: CH-PHOTOS.dwg

DRAWING TITLE:
 INSPECTION PHOTOS
 MUNICIPAL ENGINEERING SERVICES
 REPLACEMENT OF CITY HALL ROOF

PROJECT NO:
 2389-15-33
 DRAWING NO:
 S5
 SHEET NO:
 6